

# SITES & MUSEUMS

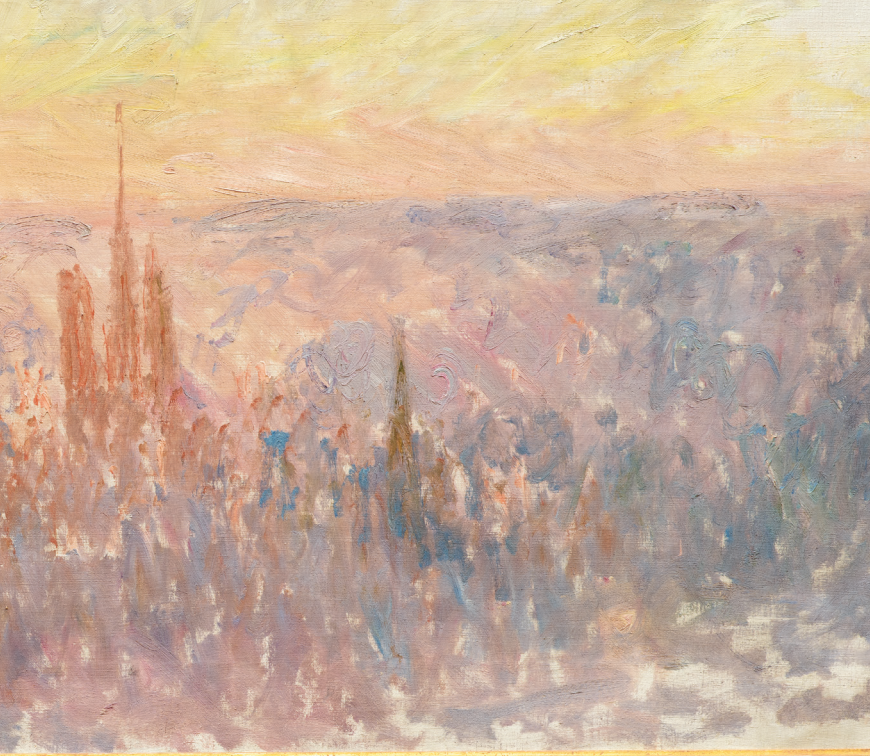
RIJ  
EN  
TOURISME





*Vue générale de Rouen*, Claude Monet, 1892,  
musée des Beaux-Arts de Rouen









# Rouen Normandy, A city of Art and History

An open-air history book, a boundless source of artistic inspiration, and a spectacular natural setting nestled between the river Seine and verdant forests — the city of Rouen Normandy blends centuries of heritage with vibrant innovation and UNESCO-recognised gastronomy. Explore a region steeped in history and creativity, home to exceptional museums and iconic monuments, and fall under the timeless charm of Rouen and the Seine Valley.

Awarded the prestigious “*Villes et Pays d’art et d’histoire*” label since 2012, Rouen Normandy proudly showcases its cultural heritage every day — from charming half-timbered houses to red-brick factories, Impressionist masterpieces to Arsène Lupin’s adventures, apples along the famous Route des Fruits to Duclair’s celebrated duck dishes, and from the picturesque Seine Valley to majestic forests. Step into a destination where every street, flavour, and landscape tells a story.

[visiterouen.com](http://visiterouen.com)

## FOLLOW THE GUIDE

The fun and clever web series that takes a fresh look at Normandy’s heritage...



## HIGHLIGHTS & DISCOVERY TRAILS

Who was Gustave Flaubert, Rouen’s celebrated novelist? Can Rouen and Elbeuf-sur-Seine be explored by bicycle? What’s the story behind Rouen Cathedral? Are there curated discovery trails designed specifically for children? The answer to each question is YES! Pick up your complimentary guides at the Rouen Tourist Office!

## GOTHIC SAINT-OUEN

Begun in 1318, the Abbey Church of Saint-Ouen is a masterpiece of Norman Gothic architecture. Weathered by time, its western façade and the intricate Marmousets portal were in need of major restoration. After five years of painstaking work, the pale stone now gleams once again. A truly spectacular sight!

# Musée des Beaux-Arts

Stroll through one of France's leading fine art museums, renowned for its exceptional collection of paintings that have established Rouen as a true capital of the arts. Wander through galleries adorned with masterpieces by Caravaggio, Fontana, Velázquez, Poussin, Rubens, Vigée-Lebrun, Delacroix, Géricault, Modigliani, and Duchamp. The museum also houses France's largest Impressionist collection outside Paris, featuring Monet, Pissarro, Renoir, Bracquemond, and Caillebotte. From France to Italy, Spain to Northern Europe, enjoy a journey through 500 years of history of art.

**Esplanade Marcel-Duchamp, Rouen**  
**Accessible for wheelchairs and strollers**

**26 bis, rue Jean-Lecanuet**  
**+33 (0)2 35 71 28 40**  
**info@musees-rouen-normandie.fr**  
**musees-rouen-normandie.fr**

**Free admission**  
**Open Wednesday to Monday,**  
**10 a.m. to 6 p.m.**  
**Closed on 1 January, 1 May, 1 and**  
**11 November, and 25 December**

## MAKE YOURSELF AT HOME

Cosy sofas and armchairs, a self-service piano, free Wi-Fi, and coffee at your fingertips... At the museum, relax, unwind, and feel right at home!

## TROMPE-L'ŒIL

Several trompe-l'œil paintings are tucked away in the galleries — will you spot them?

## AUDIO TOUR

Two self-guided tours are available on your phone via a free app.









# Musée de la Céramique

Step into the Ceramics Museum and discover the Rouen way of life. For over four centuries, faience was Rouen's pride. It featured in every corner of daily life: from tableware and decorative objects to sculptures, toiletry sets, and ornate centrepieces... Rouen's faience factories, once thriving on the left bank of the Seine, were renowned worldwide for their exceptional quality and artistry. Today, more than a thousand remarkable pieces bring this rich, yet often overlooked, story of creativity and craftsmanship to life.

**1, rue Faucon or  
94, rue Jeanne d'Arc, Rouen  
+33 (0)2 76 30 39 26  
info@musees-rouen-normandie.fr  
musees-rouen-normandie.fr**

**The museum is currently closed for renovation.**

**The garden is open Wednesday to Monday, from 2 p.m. to 6 p.m.**

## TOWN HOUSE

The museum is housed in the former Hôtel d'Hocqueville, a grand 17<sup>th</sup>-century town house with an intimate garden tucked away behind its walls. Little-known fact: the site once served as the prison of Rouen's medieval castle!

## REVOLUTIONARY!

One of the rooms is dedicated to faience made during the French Revolution. Watch out for the chopped-off heads!

## AROUND THE WORLD

In the 18<sup>th</sup> century, Madame Le Coq de Villeray led one of Rouen's major faience workshops. Among her creations were two extraordinary globes — one terrestrial, one celestial — made for a local château. Standing 1.47 metres tall, these spectacular pieces are now proudly displayed in the museum.

# Musée des Arts du fer Le Secq des Tournelles

A stunning Gothic church, 15,000 pieces of wrought iron, and two rather unconventional collectors — welcome to the fascinating world of the Le Secq des Tournelles Museum of Ironwork. In the 19<sup>th</sup> century, Henri Le Secq and his son assembled one of the world's largest collections of ironwork, with objects dating back over 2,000 years to the Gallo-Roman era. From delicate metalwork to everyday tools, each piece reveals the incredible skill of craftsmen from across Europe and beyond. A truly unique museum, full of unexpected treasures.

**Church Saint-Laurent,  
rue Jacques-Villon, Rouen**  
**Wheelchair and pushchair access:**  
**via the north side of the church,  
rue Deshays**  
**+33 (0)2 76 30 39 18**  
**[info@musees-rouen-normandie.fr](mailto:info@musees-rouen-normandie.fr)**

**Free admission**  
**Open Wednesday through Monday**  
**from 2 p.m. to 6 p.m.**  
**Closed on 1 January, 1 May,**  
**1 and 11 November,**  
**and 25 December**

## HENRI AND HENRY

Henri Le Secq (1818–1882) was a true Renaissance man — painter, engraver, collector... and a pioneer of early photography. His son Henry (1854–1925) expanded the collection and donated it to the City of Rouen in 1917. It found its home in the church Saint-Laurent.

## GALLERY VIEW

Climb up to the gallery for a stunning panoramic view of the entire museum.

## BAT LAMP

Among the pieces on display: locks, a candle snuffer, weights, a bed, a sign shaped like a racket... and a bat-shaped lamp.









# Historial Jeanne d'Arc

Step inside the majestic Archbishop's Palace, just by Rouen Cathedral, and relive the extraordinary fate of Joan of Arc in the very place where her trials were held. Through a breathtaking digital journey, visitors are plunged into a gripping investigation led by Jean Juvénal des Ursins — tracing her military campaigns to reclaim the French throne, right through to her tragic death at the stake. As you move from room to room, the centuries-old walls of the palace come to life, revealing the true story of Joan of Arc. A site dedicated to her legacy, the Historial also explores how her image was shaped and evolved over the centuries — from historical figure to legendary national icon.

**7, rue Saint-Romain, Rouen**  
**[rouen-sitesetmonuments.fr](http://rouen-sitesetmonuments.fr)**

**Open Tuesday to Sunday,  
10 a.m. to 7 p.m.**  
**Standard admission: €12 •**  
**Concessions: €9 • Family ticket: €36**  
**Free audio guide available  
in 9 languages**

## **HISTORIC COURTROOM**

Once the seat of ecclesiastical justice, the court de l'Officialité witnessed both Joan of Arc's condemnation in 1431 and her rehabilitation in 1456.

## **PANORAMIC VIEW**

Climb the Historial's watchtower for unrivalled views over Saint-Maclou Church and Rouen Cathedral.

## **IMMERSIVE EXPERIENCE**

Through mapping, projections and immersive sound, Joan of Arc's epic story comes to life on the walls of the Archbishop's Palace.



# The Donjon of Rouen

The sole remaining part of Philippe Auguste's 13<sup>th</sup> century castle, the Donjon stands as a striking testament to Rouen's medieval past. This imposing tower, where Joan of Arc was once threatened with torture, holds centuries of gripping history within its walls. Explore with a guide or wander at your own pace to uncover the secrets of its fortified design and the hidden details scattered throughout. Carved coats of arms, strange inscriptions, a mysterious well — the most fascinating stories often lie in the smallest corners.

**Rue du Donjon, Rouen**  
**[rouen-sitesetmonuments.fr](http://rouen-sitesetmonuments.fr)**

**Check opening times and ticket prices at [www.donjonderouen.com](http://www.donjonderouen.com)**  
**Standard admission: €3 •**  
**Concessions: €2.50 • Family ticket: €10 (2 adults + 2 children aged 6 to 18)**

## JOAN OF ARC

On 9 May 1431, during her captivity, Joan of Arc was taken to the Donjon, where she faced the chilling threat of torture — a moment of fear that still echoes through its walls.

## WHAT A STRUCTURE!

The Donjon of Rouen is a striking example of medieval military architecture, with its circular design, 35-metre height, and walls over 4 metres thick.

## REQUISITIONED DURING THE OCCUPATION

In 1944, the Donjon of Rouen was turned into a bunker by the German army, returning to military use after 350 years of inactivity.





# La Maison sublime

Beneath the courtyard of Rouen's courthouse lies a hidden treasure: the Maison Sublime, the oldest Jewish monument in France. Built in the 12<sup>th</sup> century, this mysterious site still holds secrets about its original purpose. The stone walls, marked with centuries-old graffiti, speak of a once-thriving Jewish community at the heart of medieval Rouen. Led by an expert guide and immersed in an intimate, contemplative setting, visitors descend into the archaeological crypt to explore this unique and deeply moving place. A rare and fascinating glimpse into the past for those with a passion for heritage.

**36, rue aux Juifs, Rouen**  
**[rouen-sitesetmonuments.fr](http://rouen-sitesetmonuments.fr)**

**Booking required**  
**[on visiterouen.com](http://visiterouen.com)**

**Guided tours on Saturdays**  
**at 10:30 a.m. and 2:30 p.m.,**  
**and on Tuesdays and Thursdays**  
**at 2:30 p.m. during school holidays**  
**Standard admission: €9.50 •**  
**Concessions: €8.50**

## HEBREW GRAFFITI

Around fifteen Hebrew inscriptions can still be seen on the interior walls of the monument. Some are verses from the Book of Kings — one of which may be translated as:  
*"May this house be sublime!"*

## AN UNEXPECTED DISCOVERY

The monument was uncovered by chance in 1976 when a digger was excavating the courtyard of the courthouse!

## THE MYSTERY REMAINS

Since its discovery, the Maison Sublime has drawn the attention of experts from around the world. Rabbinical school, synagogue, private home — the building's original purpose is still unknown.



# Musée national de l'Éducation

Tucked away on the picturesque pedestrian street of Eau-de-Robec, the National Museum of Education is set within a striking late-medieval building, listed for its distinctive slate façade. Part of its extensive collection on display traces the history of education in France — both at school and at home — from the 16<sup>th</sup> century to the present day. A highlight of the permanent exhibition is a meticulously recreated 19<sup>th</sup> century classroom, complete with wooden desks, a teacher's platform, blackboard and period teaching tools, offering a vivid glimpse into school life of the time. The museum also features a wide range of temporary exhibitions, accompanied by a lively cultural programme for visitors of all ages.

**185, rue Eau-de-Robec, Rouen**  
**+33 (0)2 35 07 66 61**  
**[munae.fr](http://munae.fr)**

**Free admission**  
**Open daily except Tuesdays**  
**Opening hours available**  
**on the website**

## BEHIND THE SCENES

During national events like Museum Night and European Heritage Days, Munaé offers special tours of its reserves, housed in the resource centre on Rue de Bihorel.

## A WARM WELCOME

Munaé holds the “Normandie Destination d'Excellence” and “Accueil Vélo” quality labels, recognising its commitment to excellence and cyclist-friendly facilities.

## A MUSEUM FOR EVERYONE

Admission to all exhibitions is free, and a wide range of visitor resources is available to enhance your experience.



Mardi 25 octobre  
*Plus fait douceur que violence*





# Musée Beauvoisine

The Musée Beauvoisine brings together an exceptional collection of natural history, ethnography, art and archaeology — all shedding light on the story of Rouen and its connections with the wider world. Cultures near and far, past and present, are explored through themes that resonate with today's major issues: economic, political and artistic exchange between peoples, scientific discoveries, and humanity's relationship with the environment. Dedicated to life in all its forms, the museum offers a fresh perspective on the richness and complexity of the world we live in today.

**198, rue Beauvoisine ou  
55, rue Louis Ricard, Rouen  
+33 0(2) 76 30 39 50  
[info@musees-rouen-normandie.fr](mailto:info@musees-rouen-normandie.fr)  
[musees-rouen-normandie.fr](http://musees-rouen-normandie.fr)**

**Reopening scheduled for late 2028**

## UNDER RENOVATION

The museum is currently closed for major restoration work.

Its cloister, listed as a historic monument, will be restored to its 17<sup>th</sup> century.

## ON TOUR

While the museum is closed, its treasures are travelling to other museums — in Rouen, across France, and abroad.

## STAY CONNECTED

The museum's activities are still going strong! Workshops for children and families now take place off-site.



# Aître Saint-Maclou

In the heart of Rouen, the Aître Saint-Maclou is a former ossuary — a rare and hauntingly beautiful site in France reminding of the devastating plague epidemics of the Middle Ages. With its timber-framed galleries carved with skulls, bones, and gravediggers' tools, this unusual place draws visitors in with its eerie, captivating atmosphere. Whether accompanied by a guide or following the audio tale of The Cat and the Gravedigger, the visit is both immersive and deeply compelling. Today, this historic courtyard has become a vibrant cultural space, home to a restaurant and a craft gallery. Blending funerary heritage with contemporary creativity, the Aître offers a truly original experience where history, architecture and curiosity come together.

**186, rue Martainville, Rouen**  
**[rouen-sitesetmonuments.fr](http://rouen-sitesetmonuments.fr)**

**Free and open daily from 9 a.m. to 7 p.m., except 1 January, 1 May and 25 December**  
**Guided tour every Sunday at 3 p.m. • €7**  
**Audio guide available at the reception in 6 languages • €5**

## DANSE MACABRE

The Aître Saint-Maclou features a unique example of a Danse Macabre. Carved onto the columns, Death is shown leading the living into the afterlife.

## A PLACE OF LEARNING

Once a place of education, the Aître Saint-Maclou welcomed poor children from the neighbourhood as early as the 17<sup>th</sup> century.

From 1940 to 2014, it was home to Rouen's School of Fine Arts.

## MUMMIFIED CAT

Peering out from its little window, the Aître's mummified cat keeps watch over passers-by. But what's the story behind it?







# Gros-Horloge

Take in breathtaking views over the cathedral rooftops, unravel the mystery of Rouen's sheep, discover how a medieval clock works, and step into the city's rich past — all in one unforgettable visit.

The Gros-Horloge, Rouen's first town hall, once kept time for the whole city, housing its communal bells and clock. Its Renaissance archway, stretching over the bustling street below, is one of Rouen's most iconic landmarks. The tour takes you behind the scenes: climb up through the dial room, explore the governor's private apartments, and get up close to the bells and the fascinating 14<sup>th</sup> century mechanism.

**Rue du Gros-Horloge, Rouen**  
**+33 (0)2 35 08 01 90**

**Open Tuesday to Sunday**  
**For opening hours and ticket prices,**  
**visit [Rouen.fr](https://rouen.fr)**

## AUDIO-GUIDED TOUR

Admission includes an audio guide, available in 8 languages.

## THE PANORAMIC VIEW

The visit ends with a stunning panorama over Rouen — offering sweeping views of the surrounding hills, the River Seine, the lift bridge, the city's rooftops and its most iconic landmarks.

## FAMILY-FRIENDLY

The tour is ideal for families, with a free children's version of the audio guide and an activity booklet to help younger visitors explore and enjoy the experience.

# Château de Robert le Diable

Perched high above the meanders of the Seine, just 20 minutes from Rouen, the Château de Robert le Diable is a legendary medieval fortress steeped in myth and history. Linked to the infamous figure of Robert the Devil, the castle was destroyed and rebuilt several times, notably during the reconquest of Normandy by Philip Augustus and the Hundred Years' War. Today, the site offers Explor Games®, guided walks, and large-scale historical re-enactments, providing a fun and immersive journey into the castle's fascinating past and enduring mysteries.

**Rue du Lieutenant Jacques Hergault, Moulineaux**  
**[rouen-sitesetmonuments.fr](http://rouen-sitesetmonuments.fr)**

**Park open daily**  
**from 10 a.m. to 6 p.m.**  
**The castle and moat are open**  
**from July to September,**  
**Wednesday to Sunday.**  
**Guided walks and Explor Games®**  
**available from July to September**

## THE MAN BEHIND THE LEGEND

The legend of Robert the Devil dates back to the 12<sup>th</sup> century. According to the tale, he was born of a pact with the devil and lived a life marked by violence and cruelty. But before his death, he repented and withdrew from the world, living out his final days as a hermit.

## A STRATEGIC POSITION

The present-day ruins of the Château de Robert le Diable stand on the very site of a medieval fortress built during the time of ducal Normandy.

## A LOCAL FAVOURITE

Famous for its replica Viking ship, the château was closed to the public for many years. Its long-awaited reopening in 2022 was warmly welcomed by locals across Normandy.







# Abbaye de Jumièges

A true gem of the Seine Valley, Jumièges Abbey, property of the Seine-Maritime Department, stands as a powerful reminder of the influence once held by one of the greatest monastic centres in Western Europe. These striking ruins, unique in Europe, tell over a thousand years of Normandy's rich and turbulent history. At the heart of the site is the majestic Church of Notre-Dame — a masterpiece of Norman Romanesque architecture. Clad in pale limestone, its twin towers rise 46 metres high, overlooking the remains of the cloister and convent buildings, all set within a serene 15-hectare park dotted with centuries-old trees.

**24, rue Guillaume le Conquérant,  
Jumièges**  
**+33 (0)2 35 37 24 02**  
**abbaye-de-jumieges@seinemaritime.fr**  
**abbayedejumieges.fr**

**Open daily**  
**15 April to 15 September:**  
**9:30 a.m. to 6:30 p.m.**  
**16 September to 14 April:**  
**9:30 a.m. to 1 p.m.**  
**and 2:30 p.m. to 5:30 p.m.**  
**Closed on 1 January, 1 May, 1 and**  
**11 November, and 25 December**  
**Standard admission: €7 •**  
**Abbey Pass: €9.50**

## JUMIÈGES 3D

Step back in time with the Jumièges 3D app and explore a stunning virtual reconstruction of the abbey as it once stood — right where you are. Free to download on Google Play and the App Store. iPads available to rent at the abbey reception for €5.

## THE ABBOT'S LODGE

This fully restored 17<sup>th</sup> century manor now hosts exhibitions of visual arts and contemporary photographs.

## ROMANTIC RUINS

The abbey's open-sky nave, crumbling walls and peaceful natural surroundings create a truly romantic setting — admired by Turner and praised by Victor Hugo, who called it "the most beautiful ruin in France."

# Abbaye Saint-Georges-de-Boscherville & its gardens

This monastic site, which became a Benedictine abbey in the 12<sup>th</sup> century, continues to shine across the serene landscapes of the Seine Valley. Its Romanesque church, now serving as the parish church, remains a jewel of sacred architecture. In its gardens, owned by the Department of Seine-Maritime, open to visitors, stand the late 12<sup>th</sup> century chapter house with its sculpted columns and carved capitals, the chapel, and the 17<sup>th</sup> century convent buildings, now home to an exhibition space and a boutique. Throughout the year, seasonal exhibitions and events celebrate the art of gardening and fruit growing, reflecting the living rhythm of its lush, ever-evolving kitchen garden.

**12, route de l'Abbaye,  
Saint-Martin-de-Boscherville  
+33 (0)2 35 32 10 82  
abbayesaintgeorges@seinemaritime.fr  
jardinsdelabbayesaintgeorges.fr**  
**Open daily: 1 April to 31 October:**  
**9:30 a.m. to 6:30 p.m. March and**  
**November: 9:30 a.m. to 12:30 p.m. and**  
**1:30 p.m. to 5 p.m. Closed from Dec.**  
**to Feb. And on 1 May, 1 and 11 Nov.**  
**Admission: €6 • Abbey Pass: €9.50**

## THE GARDENS

Set across four terraces, these formal French gardens are unique in Normandy. Stroll through vegetable plots, orchards, and beds of medicinal and aromatic plants, all framed by sweeping views over the Seine Valley.

## A DISTINCTIVE ARCHITECTURE

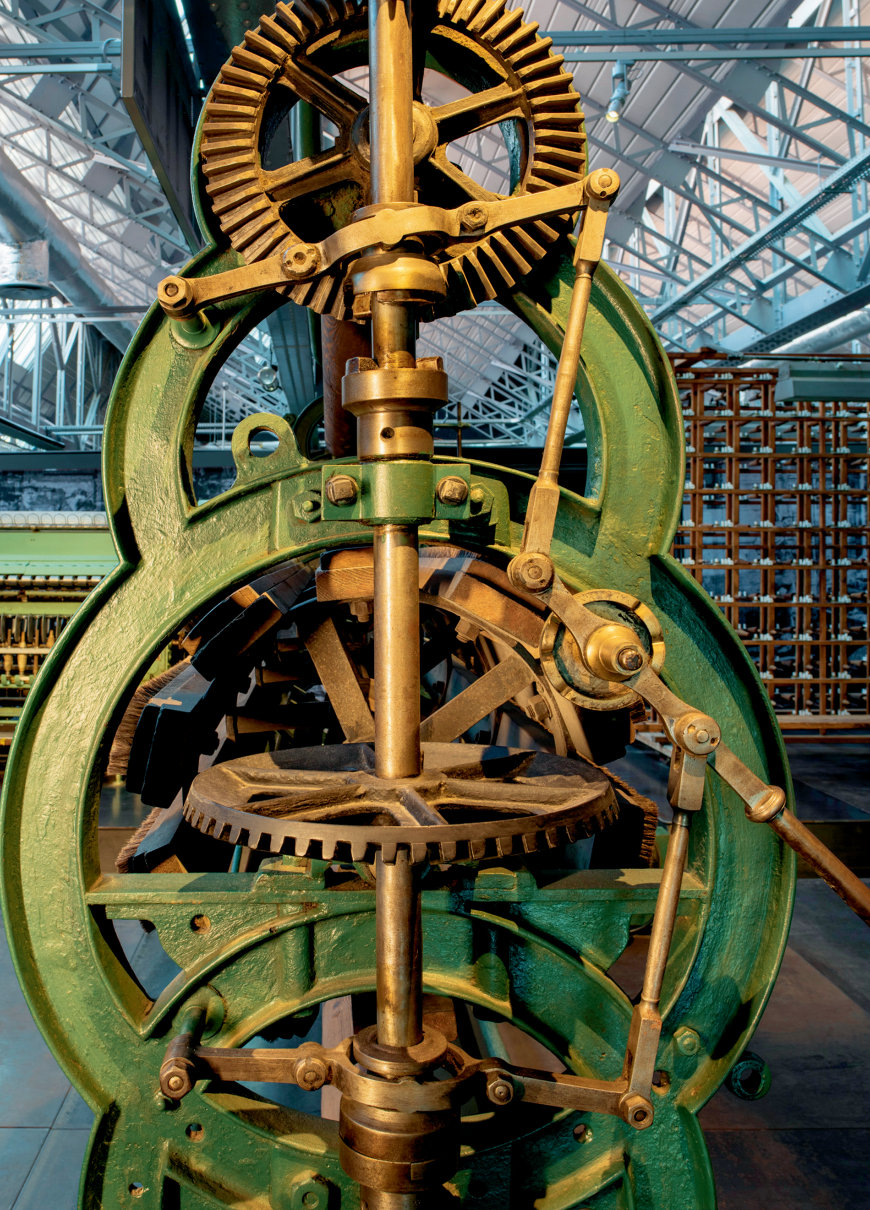
The abbey church is built from pale Caumont stone, a signature of Norman Romanesque style. Its clean, harmonious lines give the building a timeless elegance.

## THE ABBEY CHURCH

Spanning six hectares, the site is home to one of the finest Romanesque abbey churches of the 12<sup>th</sup> century, with its soaring lantern tower still dominating the surrounding landscape.







# Fabrique des savoirs

Just 20 km from Rouen, in a scenic meander of the Seine, the town of Elbeuf-sur-Seine grew into a thriving textile hub. From the 16<sup>th</sup> century onwards, tens of thousands of workers helped produce the town's famous woollen cloth — a fabric that earned Elbeuf a reputation well beyond Normandy.

Set in the former Blin & Blin textile factory, the Fabrique des savoirs brings this vibrant industrial past to life. Dive into the fascinating story of Elbeuf and the Seine through exhibitions that blend archaeology, science, architecture, natural history, and immersive video mapping — a rich, hands-on experience for curious minds of all ages.

**7, cours Gambetta, Elbeuf-sur-Seine**  
**+33 (0)2 32 96 30 40**  
**info@musees-rouen-normandie.fr**  
**musees-rouen-normandie.fr**

**Free admission**

**Open Wednesday to Monday**  
**from 2 p.m. to 6 p.m.**

**Archives open Thursdays and**  
**Fridays from 2 p.m. to 6 p.m.**  
**Closed on 1 January, 1 May,**  
**1 and 11 November,**  
**and 25 December**

## EXPLORE THE TOWN

After your visit, take a stroll through Elbeuf's historic streets and discover the town's rich heritage. A walking trail with 22 information panels highlights key sites and stories along the way.

## THE BEEHIVE

The town's coat of arms features a beehive and bees — a nod to Napoleon Bonaparte's visit in 1802, when he is said to have exclaimed: "Elbeuf is a hive — everyone here works hard!"

## ARCHIVES

For history lovers, the on-site archives offer a treasure trove of material from Elbeuf and surrounding towns — with over 4 km of records waiting to be explored!



# Corderie Vallois

A working factory with over 200 years of history... Once a paper mill, then a spinning mill, it was transformed by Jules Vallois into a cotton rope factory. Amazingly, much remains unchanged: the waterwheel still drives the machines, the looms echo with the river's rhythm, and the wooden floors still creak underfoot. Hidden in the Cailly Valley, the Corderie is one of the last traces of a once-thriving industry — shaped by ingenuity and grit.

A living museum perfect for families — and yes, you'll leave with your very own handmade rope!

**185, route de Dieppe,  
Notre-Dame-de-Bondeville  
+33 (0)2 35 74 35 35  
info@musees-rouen-normandie.fr  
musees-rouen-normandie.fr**

**Free admission**

**Open daily from 1:30 p.m. to 6 p.m.  
Closed on 1 January, 1 May, 1 and  
11 November, and 25 December**

## A SENSORY EXPERIENCE

The smell of grease, the sound of machines, the roughness or softness of the ropes... every step of your visit will awaken your senses.

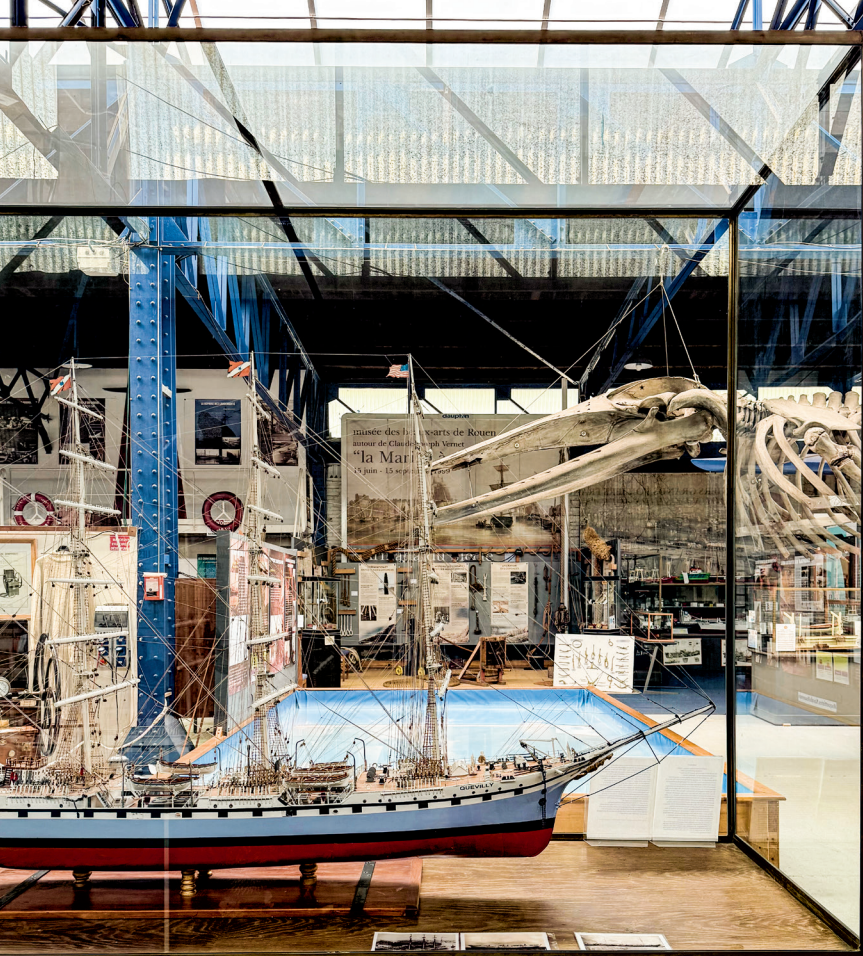
## HIDDEN SECRETS

During the visit, the museum team sets the machines in motion and shares fascinating stories and anecdotes from the Corderie's past. The craft — and the secrets behind it — have been passed down through generations.

## WOMEN AT WORK

The factory workforce was made up largely of women. Their voices and memories — of daily life, atmosphere, and working conditions — bring the visit to life.







# Musée maritime, fluvial et portuaire

Dive into Rouen's rich maritime, river, and port heritage at one of the city's most unexpected museums. Spread across fifteen themed spaces, the museum charts an epic journey — from Viking ships to 21<sup>st</sup>-century engineering feats like the Flaubert Bridge.

Discover how the Port of Rouen has shaped the city and the wider world, from global trade routes to river navigation along the Seine. Two standout highlights bring the collection to life: *La Dauphine*, a stunning model of a Renaissance exploration ship, and *Le Pompon Rouge*, a real barge you can explore — moored just outside the museum.

## Hangar portuaire n° 13

Quai Émile Duchemin, Rouen

+33 (0)2 32 10 15 51

[musee@musee-maritime-rouen.asso.fr](mailto:musee@musee-maritime-rouen.asso.fr)

[www1.musee-maritime-rouen.asso.fr](http://www1.musee-maritime-rouen.asso.fr)

## Opening hours

Tuesday, Wednesday and Thursday:

1:30 p.m. to 4:30 p.m.

Friday, Saturday and Sunday:

2 p.m. to 5 p.m.

Closed on 1 January, 1 May,

24, 25 and 31 December

Standard admission: €6 •

Concessions: €4

## LE POMPON ROUGE

This post-war barge, open for visits including its hold and wheelhouse, is also an unusual and atmospheric venue available for private hire.

## THE NORMAN CORSAIR'S TREASURE

Ready to track down a legendary pirate's hoard? This escape game whisks you aboard Spanish caravels in search of a hidden chest of diamonds. A thrilling adventure for ages 12 and up!

## BOAT RESTORATION IN ACTION

At the museum's restoration workshop, a master shipwright brings historic wooden boats back to life. A rare glimpse into traditional maritime craftsmanship at work!

# Musée Flaubert et d'Histoire de la médecine

Visit the childhood home of Gustave Flaubert (1821–1880), one of the greatest novelists of the 19<sup>th</sup> century and author of the iconic *Madame Bovary* (1857). Born and raised in this very house, Flaubert's world is revealed through personal belongings and a faithful re-creation of his original bedroom. Set within Rouen's former Hôtel-Dieu hospital, the museum also houses a fascinating — and surprising — collection on the history of medicine. From the Middle Ages to the early 20<sup>th</sup> century, visitors can explore wax anatomical models, vintage dental tools, a rare childbirth mannequin, and even a six-person hospital bed — all telling the story of medicine and patient care in Rouen across the centuries.

**51, rue Lecat, Rouen**  
**+33 (0)2 76 30 39 90**  
**info@musees-rouen-normandie.fr**  
**musees-rouen-normandie.fr**

**Free admission**  
**Open Tuesday through Sunday**  
**from 2 p.m. to 6 p.m.**  
**Closed on 1 January, 1 May, 1 and**  
**11 November, and 25 December**

## A BRILLIANT MIDWIFE

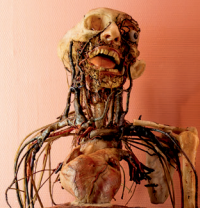
In the 18<sup>th</sup> century, midwife Angélique du Coudray (1714–1794) tackled high infant mortality with a revolutionary invention: a fabric mannequin for teaching safe childbirth. The museum preserves the only known example.

## READ IN THE GARDEN

A book-sharing box and comfy chairs are waiting for you in the garden — the perfect spot to relax with a good read.

## THE SURGEON

What connects Flaubert to the world of medicine? His father was the chief surgeon at Rouen's Hôtel-Dieu hospital. The family lived in official quarters within the hospital.







# Pavillon Flaubert

Located on the banks of the Seine, this pavilion is the last surviving part of the once-grand Croisset estate, where Gustave Flaubert (1821–1880) lived from 1846 until his death. Here, he wrote iconic works such as *Madame Bovary*, *Salammô*, and *Three Tales*. Flaubert hosted major literary figures at Croisset, including George Sand, Ivan Turgenev, Guy de Maupassant, and the Goncourt brothers. Now a listed historic monument, the pavilion preserves personal objects and memories linked to the life and legacy of one of France's greatest novelists.

**18, quai Gustave Flaubert,  
Croisset-Canteleu**  
**+33 (0)2 76 30 39 88**  
**info@musees-rouen-normandie.fr**  
**musees-rouen-normandie.fr**

**Free admission**

**May, June, and September:**

**Saturdays and Sundays**

**from 2 p.m. to 6 p.m**

**July and August: Wednesday**

**through Sunday from 2 p.m to 6 p.m**

**The rest of the year, and weekdays**

**in May, June, and September:**

**by reservation only**

**Visits outside these hours also**

**available by reservation**

**Closed on 1 January, 1 May, 1 and**

**11 November, and 25 December**

## A KEEN SWIMMER

In the warmer months, Flaubert would swim in the Seine. Today, the pavilion offers a front-row seat to watch barges and cargo ships gliding along the river.

## LITERARY BREAK IN THE GARDEN

Take a moment to relax in this peaceful garden, shaded by a row of lime trees. It's the perfect spot to unwind and soak up the quiet magic of the place.

## BY BIKE

Set right along the Seine à Vélo cycle route, the Flaubert Pavilion makes an ideal stop on your ride — a refreshing break steeped in history and riverside charm.

# Maison natale de Pierre Corneille

The birthplace of French playwright Pierre Corneille (1606) has reopened after a full restoration. Visitors can delve into the world of one of France's theatrical greats, best known for *Le Cid* (1637), a milestone of classical drama.

The museum features his writing room and offers a vivid glimpse of 17<sup>th</sup>-century life in Rouen. Illustrated editions, period costumes, artworks, and screen adaptations trace Corneille's lasting influence — a legacy that still inspires today.

**4, rue de la Pie, Rouen**

**+33 (0)2 76 30 39 89**

**[info@musees-rouen-normandie.fr](mailto:info@musees-rouen-normandie.fr)**

**[musees-rouen-normandie.fr](http://musees-rouen-normandie.fr)**

**Museum currently under renovation.  
Reopening planned for 2026**

## BY THE VIEUX-MARCHÉ

The house is just a stone's throw from the famous Vieux-Marché square, where Joan of Arc was burned at the stake. Well worth the detour!

## DID YOU KNOW?

From camembert boxes and chocolate wrappers to old banknotes — Corneille has appeared everywhere! Discover how this famous playwright became a true cultural icon.

## FOR KIDS

Explore the house dressed in a theatre costume!





BIBLIOTHEQUE · CORNÉLIENNE  
FONDATION  
EDOARD · PELAY  
· 19 · OCTOBRE · 1917 ·





# Maison des Champs de Pierre Corneille

Tucked away in lush greenery, this picturesque timber-framed house was the Corneille family's country house — a quiet escape from the hustle and bustle of Rouen. Pierre Corneille (1606–1684), one of France's most celebrated playwrights, often stayed here and sought refuge in the house when plague swept through Rouen. Today, visitors can explore the more personal side of the writer's life, with period furniture, artworks, and rare editions of his plays offering a unique glimpse into his world.

**502, rue Pierre Corneille,  
Petit-Couronne  
+33 (0)2 76 30 32 80  
[info@musees-rouen-normandie.fr](mailto:info@musees-rouen-normandie.fr)  
[musees-rouen-normandie.fr](http://musees-rouen-normandie.fr)**

**Free admission  
Open Wednesday to Saturday  
from 10 a.m. to 12:30 p.m.  
and 2 p.m to 6 p.m  
Sundays: 2 p.m to 6 p.m  
From 1 October to 31 March,  
closing time is 5:30 p.m  
Closed on 1 January, 1 May,  
1 and 11 November, and  
25 December**

## A FAMILY STORY

Pierre Corneille's father purchased the house in 1608 — back then, the estate stretched across 25 hectares!

## HERITAGE KITCHEN GARDEN

With old-fashioned vegetables, medicinal herbs, and apple trees, this expansive garden is a quiet haven of peace and charm.

## HIDDEN IN THE GARDEN

The old bread oven is fired up during special events, such as the Autumn Festival.



Explore Rouen and the Seine Valley at your own pace, with plenty of experiences and attractions to match your interests!

The **ROUEN PASS** is your all-in-one ticket to discovering the region's many treasures — from visits and tastings to accommodation and transport — all at discounted rates to help you make the most of your stay.

**24, 48 or 72 hours** — pick your pass and let the journey begin! Your e-card is ready to download on the ROUEN PASS app, available on iPhone and Android — it's your pocket-sized key to the city!



**visiterouen.com**



# Contacts

## ROUEN TOURIST OFFICE

Musée des Beaux-Arts  
Esplanade Marcel Duchamp  
76000 Rouen  
Tel. + 33 (0)2 32 08 32 40  
accueil@rouentourisme.com

### OPENING HOURS

**October through April:** Monday to Saturday from 9:30 am to 6 pm except Tuesday from 10:30 am to 6 pm (except during school holidays, open on Sundays: from 10 am to 6 pm).

**May through September:** Monday to Saturday from 9:30 am to 6:30 pm (opens at 10:30 am on Tuesday). Sunday and bank holidays from 10 am to 6 pm

**Our 24/7 chatbot is here to help — anytime, day or night — at [visiterouen.com](http://visiterouen.com).**



## JUMIÈGES TOURIST OFFICE

Rue Guillaume le Conquérant  
76480 Jumièges  
Tel. + 33 (0)2 35 37 28 97  
jumieges@rouentourisme.com

### OPENING HOURS

#### March, April and October:

Tuesday to Saturday, 9:30 am to 12:30 pm and from 1:30 pm to 6 pm (opens at 10:30 am on Tuesday). Closed Sunday and Monday.

**May to September:** open daily from 9:30 am to 12:30 pm and from 1:30 pm to 6 pm (Opens at 10:30 am on Tuesday)

## ELBEUF TOURIST INFORMATION BUREAU

La Fabrique des savoirs  
7 cours Gambetta, 76500 Elbeuf  
Tel. + 33 (0)2 32 96 30 40

## DUCLAIR TOURIST INFORMATION BUREAU

Mairie, place du Général de Gaulle  
76480 Duclair  
Tel. + 33 (0)2 35 05 91 50

## LA BOUILLE TOURIST INFORMATION BUREAU

Mairie, 1 rue de la République,  
76530 La Bouille  
Tel. + 33 (0)2 35 18 01 48

